



Resolution patterns

We offer a **wide range of test patterns** for **two and three dimensional** resolution evaluation. As we do not depend on other companies and each pattern is developed and manufactured in-house, **we can prepare all combination of shapes, layouts, templates and materials for you.** Our cutting-edge technology allows us to obtain **unmatched precision** and **resolution range** in **many types of materials**

We present here only our standard test patterns. If you need something else, please contact us.

Dental resolution patterns

Pro-Res Dent Intra

lead thickness: 0.05 mm
 resolution range: 4.0 - 8.0 LP/mm
 number of groups: 7
 bars per group: 3
 size: 16 x 32 mm



Pro-Res Dent OPG

lead thickness: 0.05 mm
 resolution range: 1.6 - 3.0 LP/mm
 number of groups: 7
 bars per group: 3
 size: 17 x 31 mm



Radiography resolution pattern

Pro-Res RF BarType 1

lead thickness: 0.05 mm
 resolution range: 0.6 - 5.0 LP/mm
 number of groups: 20
 bars per group: 3
 size: 50 x 50 mm



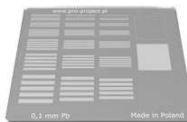
Pro-Res RF BarType6

lead thickness: 0.05 mm
 resolution range: 0.5 - 5.0 LP/mm
 number of groups: 21
 bars per group: 5
 size: 57 x 47 mm



Pro-Res RF BarType 2

lead thickness: 0.1 mm
 resolution range: 0.5 - 5.0 LP/mm
 number of groups: 21
 bars per group: 5
 size: 57 x 47 mm



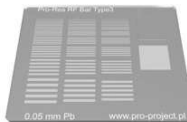
Pro-Res RF BarType7

lead thickness: 0.05 mm
 resolution range: 0.5 - 10.0 LP/mm
 number of groups: 27
 bars per group: 5
 size: 57 x 47 mm



Pro-Res RF BarType 3

lead thickness: 0.05 mm
 resolution range: 0.5 - 14.3 LP/mm
 number of groups: 30
 bars per group: 5
 size: 57 x 47 mm



Pro-Res RF BarType8

lead thickness: 0.03 mm
 resolution range: 0.5 - 14.3 LP/mm
 number of groups: 30
 bars per group: 5
 size: 57 x 47 mm



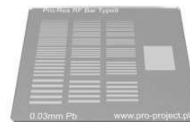
Pro-Res RF BarType 4

lead thickness: 0.1 mm
 resolution range: 1.0 - 4.86 LP/mm
 number of groups: 16
 bars per group: 5
 size: 110 x 40 mm



Pro-Res RF BarType9

lead thickness: 0.03 mm
 resolution range: 0.5 - 20.0 LP/mm
 number of groups: 33
 bars per group: 5
 size: 57 x 47 mm



Pro-Res RF BarType5

lead thickness: 0.01 mm
 resolution range: 0.6 - 5.0 LP/mm
 number of groups: 20
 bars per group: 3
 size: 50 x 50 mm



Pro-Res RF MeshType

standard wire meshes from 16 to 150
 different sizes
 different graduations
 diameter: 20 mm





Pro-Res RF ConeType1

resolution range: 1.0 - 10.0 LP/mm
 lead thickness: Pb 0.05 mm
 number of groups: 1
 size: 80 x 40 mm



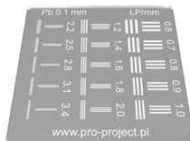
Pro-Res RF ConeType2

resolution range: 0.5 - 5.0 LP/mm
 lead thickness: Pb 0.1 mm
 number of groups: 1
 size: 150 x 50 mm



Pro-Res RF MultiBarType1

resolution range: 0.6 - 3.4 LP/mm
 lead thickness: Pb 0.1mm
 number of groups: 2x15 groups
 size: 50x50mm



Computed tomography resolution pattern

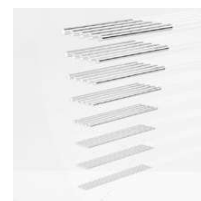
Pro-Res CT SandwichType

aluminium bars
 different sheet sizes
 standard resolution range:
 1.0 - 30.0 LP/cm



Pro-Res CT HolesType

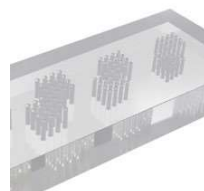
air thru holes
 different hole diameters
 standard diameters range:
 0.4 - 1.75 mm



MRI resolution pattern

Pro-Res MRI HolesType

thru holes
 different hole diameters
 standard diameters range:
 0.8 - 1.1 mm



Mammography resolution pattern

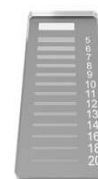
Pro-Res MAM ConeType

lead thickness: 0.03 mm
 resolution range: 1.5 - 20.0 LP/mm
 size: 26 x 60 mm



Pro-Res MAM BarType 1

lead thickness: 0.02 mm
 resolution range: 5.0 - 20.0 LP/mm
 number of groups: 13
 bars per group: 5
 size: 10 x 25 mm



Modulation Transfer Function measurement pattern

Pro-Res MTF 1

lead thickness: 0.05 mm
 resolution range: 0.25 - 10.0 LP/mm
 number of groups: 22
 resolutions: 0.25, 0.5, 0.6, 0.7, 0.85, 1.0, 1.2, 1.4, 1.7, 2.0, 2.4, 2.9, 3.5, 4.2, 5.0, 6.0, 7.0, 8.5, 10.0, 8.5, 7.0, 6.0 LP/mm
 size: 71 x 44 mm

