

Pro-Dent set

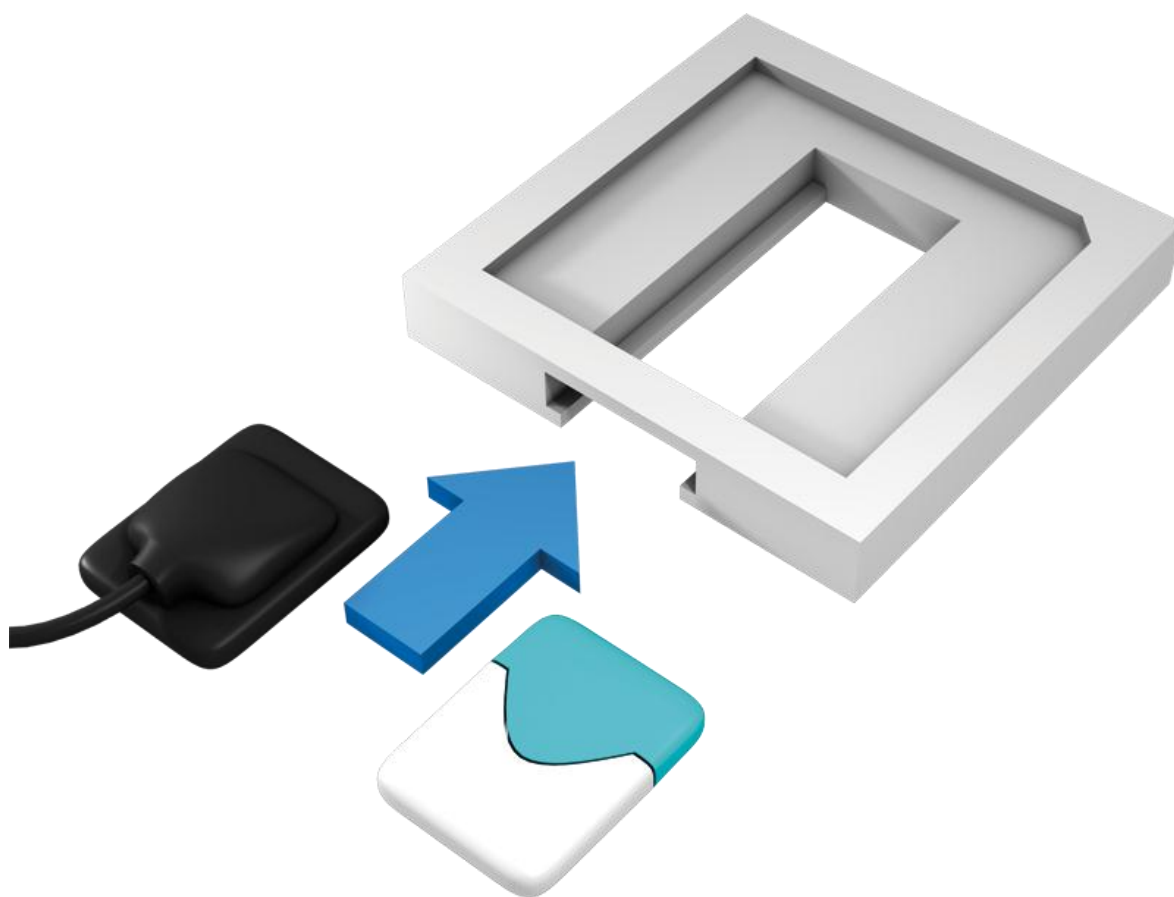


The Pro-Dent set is a universal set of phantoms for carrying out constancy and acceptance tests of conventional and digital dental X-ray units (intra-oral, panoramic and cephalometric).

This is not an all-in-one device where results of tests blur each other out. This is the only solution on the market that makes it possible to measure the x-ray beam collimation with a dental film or a digital detector.

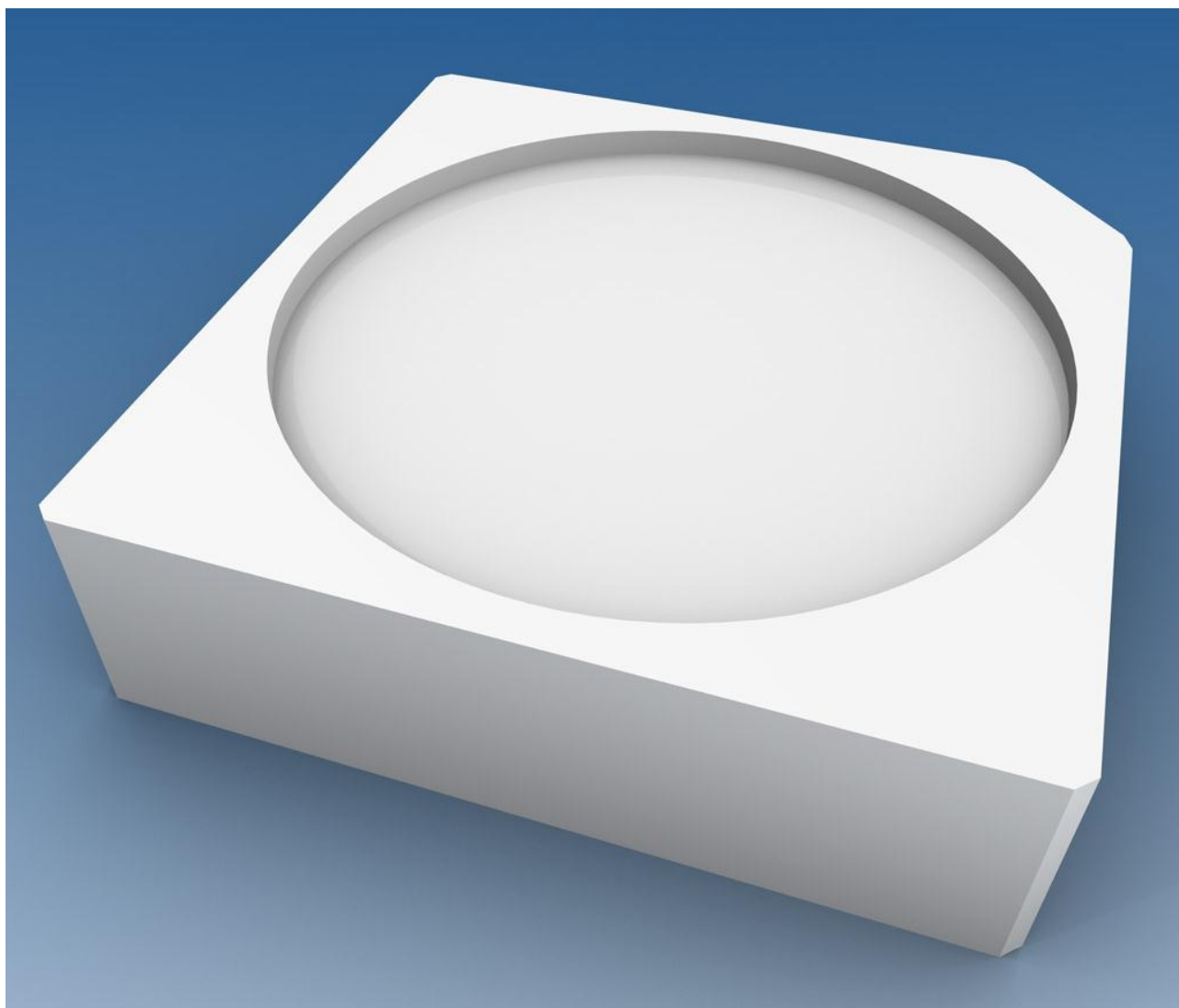
With the Pro-Dent you can do the following tests:

- dose reproducibility
- development process stability
- perpendicular X-ray beam (range $0^\circ \div 1.5^\circ$)
- limitation and alignment of the X-Ray beam (including beam radius measurement)
- spatial / line pair resolution (perpendicular, parallel and rotated 45° to anode-cathode line)
- low contrast resolution



The Pro-Dent set consists of:

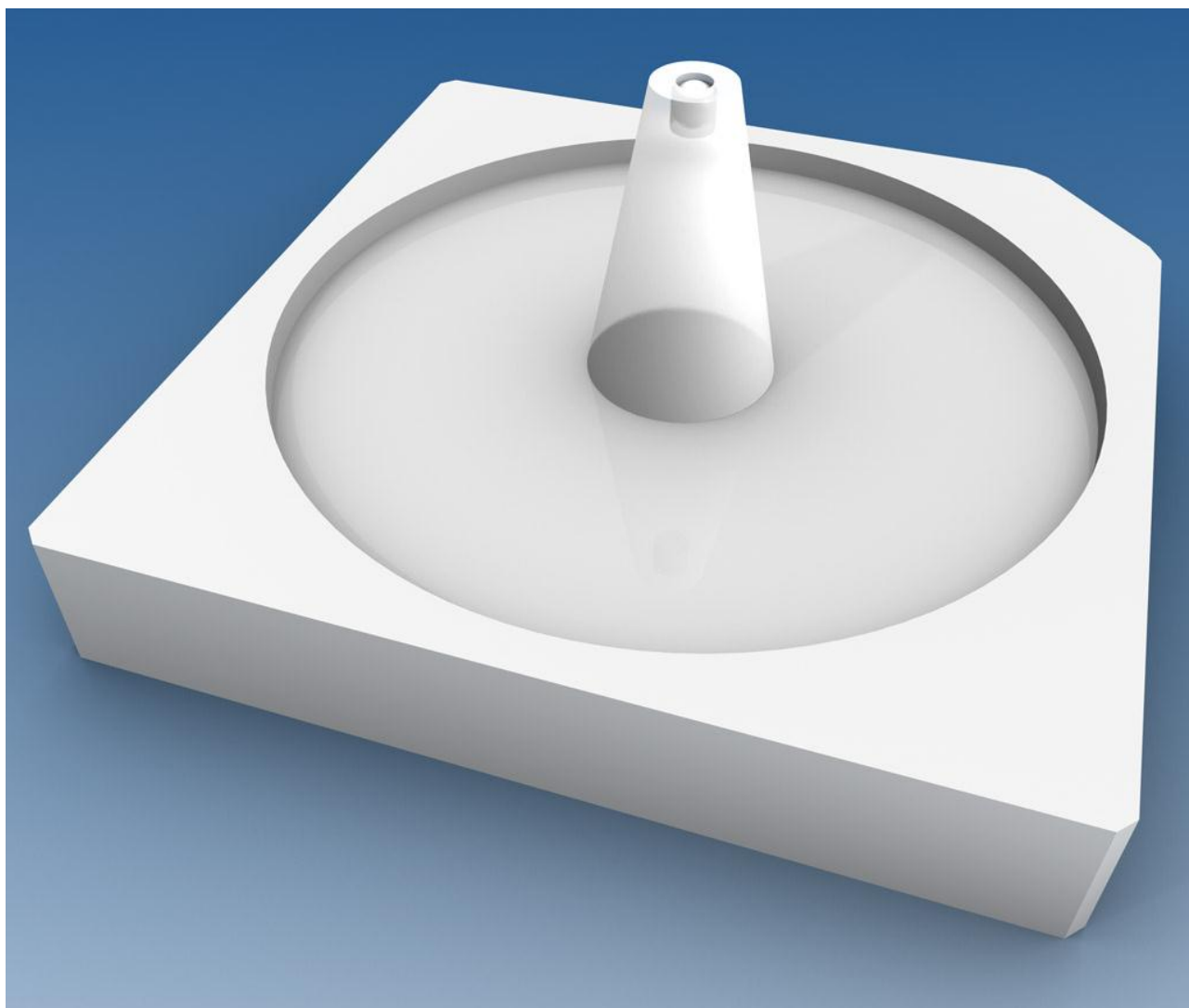
Pro-Dent α phantom



Technical data (can be modified to customer specifications):

- 3 step wedge (first step made of copper foil 0.3 mm thick, the next ones are made of polytetrafluoroethylene 8 and 16 mm thick)
- cover made of PMMA

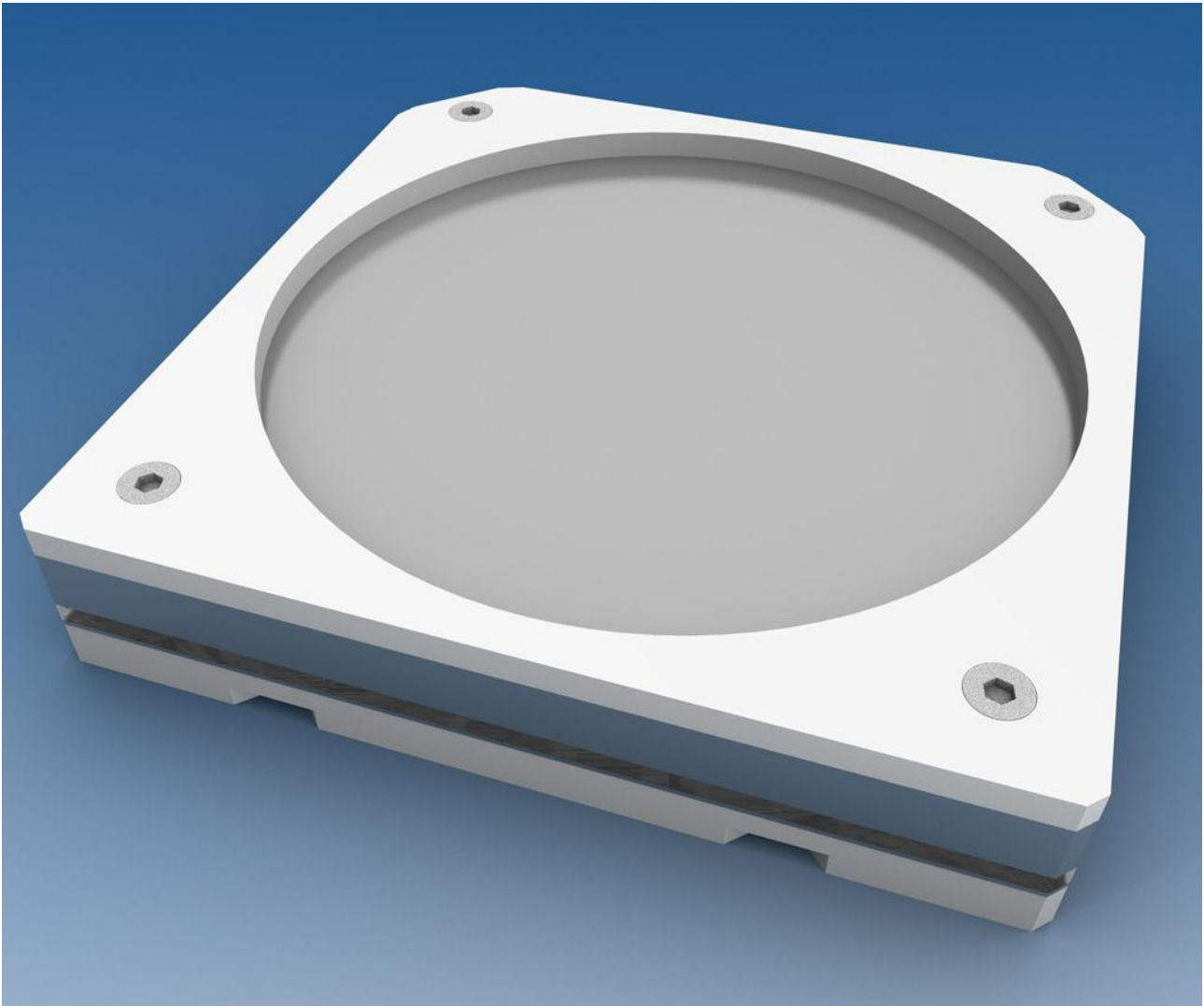
Pro-Dent β phantom



Technical data (can be modified to customer specifications):

- cone for perpendicular X-Ray beam control in the range of $0^\circ \div 1.5^\circ$
- pattern for beam radius estimation
- cover made of PMMA

Pro-Dent y phantom

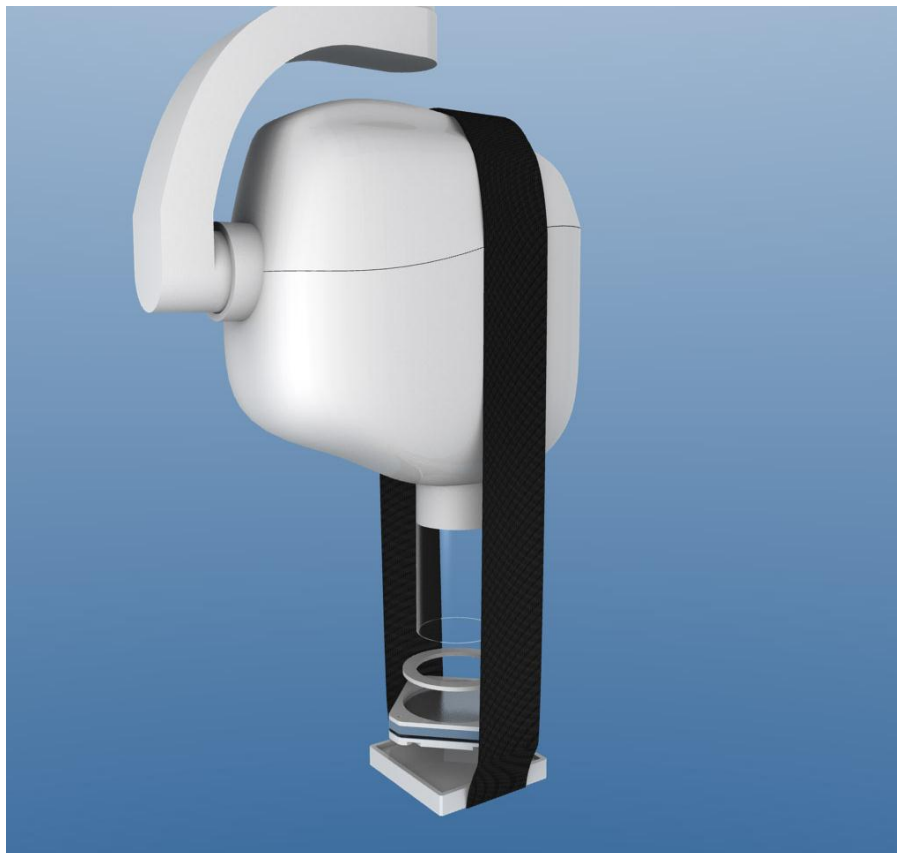


Technical data (can be modified to customer specifications):

- pattern for line pair resolution evaluation (from 4 to 8 LP/mm)
- optional second pattern for line pair resolution evaluation (from 1.6 to 3 LP/mm) – OPG units
- four holes in 0.5mm Al foil for low contrast resolution tests
- additional 6mm aluminium filter
- cover made of PMMA

Accessories:

- 0.8mm copper filter – patient's head equivalent
- positioning stand with place for an analogue film or a digital detector
- band for firm, perpendicular attachment of the phantom to the X-Ray unit's beam applicator
- rings for centering phantoms on the X-Ray unit's beam applicator
- CD with documentation
- elegant and convenient aluminium box for storing phantoms



Product features:

- Complies with:
 - IEC 61223-2-7 and IEC 61223-3-4
 - DIN 6868-5 and DIN V 6868-151
 - ÖNORM S 5240-5 and ÖNORM S 5240-11
- CE certified
- manual provides detailed guidelines for carrying out each test, results assessment and registration