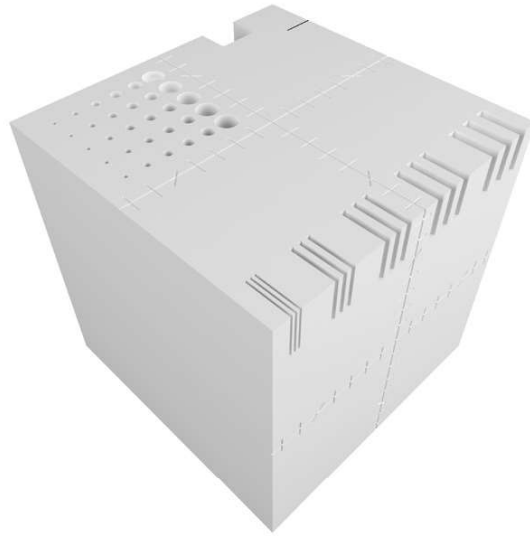




Pro-RT CTsim

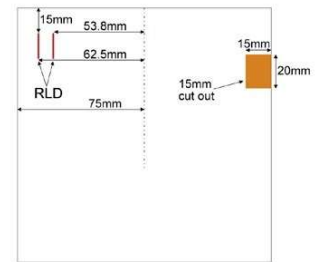
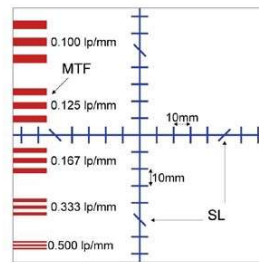
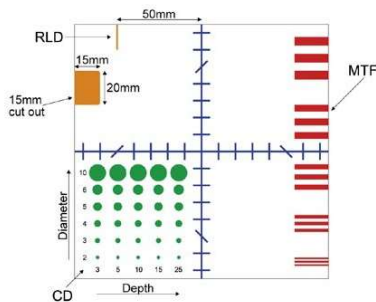
07-301



This phantom is designed for quality control of a CT simulator, which usually consists of a CT scanner, virtual simulator software and a laser marking device (marking the centre of target volume). Since geometrical planning is the core of CT simulation, periodic quality control is essential for maintaining optimum image quality and patient care. **The phantom allows performing detailed geometry and table movement tests as well as image quality assessment - low contrast resolution and high contrast detectability**

Technical data (can be modified to customer specifications):

- overall dimensions: 150 x 150 x 150 mm
- made of PMMA
- test object placed on four faces of the cube



- top Face contains contrast details objects (CD), MTF, ray line divergence (RLD) and spatial linearity (SL) patterns
- first Side Face contains MTF and spatial linearity (SL) patterns
- second and Third Side Face contains ray line divergence (RLD) pattern
- optional carrying case

Product features:

- Complies with:
 - IEC 61223-3-5
 - IEC 61223-2-6
- The manual provides detailed guidelines for carrying out each test, results assessment and registration