

Pro-Dent CT MINI

01-303



Pro-Dent CT MINI phantom is a versatile quality control tool of dental Cone-Beam CT, Dental Volume Tomography (DVT), and other 3D imaging devices with even the smallest FOV (Field Of View).

The phantom consists of a main PMMA cylinder that houses modules with different test objects.



It allows performing most important imaging quality tests such as

- image geometry
- slice geometry
- pixel (matrix) size
- artefacts, noise
- homogeneity
- linearity
- contrast
- high-contrast resolution
- low-contrast resolution (contrast sensitivity)

Accessories

- test stand with spirit level for accurate placing of the phantom in the test position
- convenient, portable case for storing and transporting the phantom



Technical data (can be modified to customer specifications)



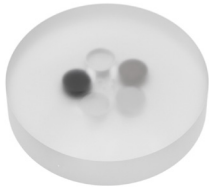
Main cylinder

- contains markings for easy positioning in the dental unit and geometric distortion section
- an array of 2.0 mm diameter, 3.0 mm long holes uniformly pitched at 10.0 mm intervals
- diameter: 110 mm
- length: 130 mm
- made of PMMA (1.19 g/cm³)



Noise / uniformity module

- 20 mm thick



Linearity module

- containing 15 mm rods made of PTFE, poliamid, PE-300, air and water emulating epoxy embedded PMMA - pixel intensity / HU values samples



High contrast resolution module

- containing 7 objects for resolution evaluation: 10, 11, 12, 13, 14, 15, 16 LP/cm
- 0.3 mm bead for Modular Transfer Function (MTF) calculation



Low contrast section

- containing rods of a different diameter: 2, 3, 4, 6, 8, 10, 12 mm, filled with a substance whose density is 3% different from the body of the module



Slice geometry module

- 4 air rods, 3mm in diameter, placed in vertices of the 30mm square
- two aluminium wire ramps

Product features:

- complies with:
 - IEC 61223-3-4 and IEC 61223-3-5
- the Manual provides detailed guidelines for carrying out each test, results assessment and registration