



# Pro-Dent Set

01-201 - intra-oral devices  
01-203 - intra-oral and OPG devices



The Pro-Dent set is a universal set of phantoms for carrying out constancy and acceptance tests of conventional and digital dental X-ray units (intra-oral, panoramic and cephalometric).

This is not an all-in-one device where results of tests blur each other out. This is the only solution on the market that makes it possible to measure the X-ray beam collimation with a dental film or a digital detector.

## Technical data (can be modified to customer specifications)



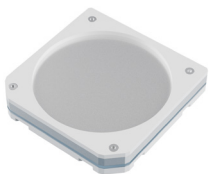
### Pro-Dent Alpha phantom

- 3 step wedge (first step made of copper foil 0.3 mm thick, the next ones are made of polytetrafluoroethylene 8 mm and 16 mm thick)
- cover made of PMMA



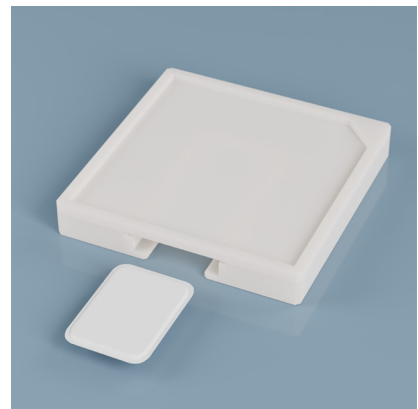
### Pro-Dent Beta phantom

- cone for perpendicular X-Ray beam control in the range of  $0^\circ \div 1.5^\circ$
- pattern for beam radius estimation
- cover made of PMMA



### Pro-Dent Gamma phantom

- pattern for line pair resolution evaluation (from 4 to 8 LP/mm)
- optional second pattern for line pair resolution evaluation (from 1.6 to 3 LP/mm) – OPG units
- four holes in 0.5 mm Al foil for low contrast resolution tests
- additional 6 mm aluminium filter
- cover made of PMMA



**With the Pro-Dent set you can do the following tests:**

- dose reproducibility
- development process stability
- perpendicular X-ray beam (range  $0^\circ \div 1.5^\circ$ )
- limitation and alignment of the X-Ray beam (including beam radius measurement)
- spatial / line pair resolution (perpendicular, parallel and rotated  $45^\circ$  to anode-cathode line)
- low contrast resolution

**Accessories:**

- 0.8 mm copper filter – patient's head equivalent
- positioning stand with a space for an analogue film or a digital detector
- band for firm, perpendicular attachment of the phantom to the X-Ray unit's beam applicator
- rings for centering phantoms on the X-Ray unit's beam applicator
- CD with documentation
- elegant and convenient box for storing phantoms

**Product features:**

- Complies with:
  - OEC 61223-2-7 and IEC 61223-3-4
  - DIN 6868-5 and DIN V 6868-151
  - ÖNORM S 5240-5 and ÖNORM S 5240-11
- the Manual provides detailed guidelines for carrying out each test, results assessment and registration