



# Pro-MAM CEDM

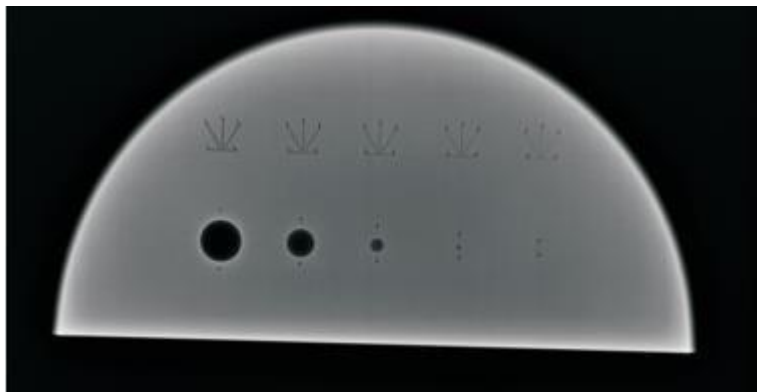
Contrast Enhanced Digital Mammography Phantom  
03-603



Phantom into which liquids (e.g. saline or BMF + contrast agent) can be injected so that contrast agent studies can be performed.

Includes spherical voids of 1, 2, 5, 10, 15 mm diameter and fibrous features with a range of sizes.

Includes syringe and needle type bd micro-fine 0.5 ml u-100 insulin syringe.



Pro-MAM CEDM phantom (03-603, Pro-Project) allows to carry out the same tests and evaluations as CEDM phantom (Leeds), as per the attached statement.