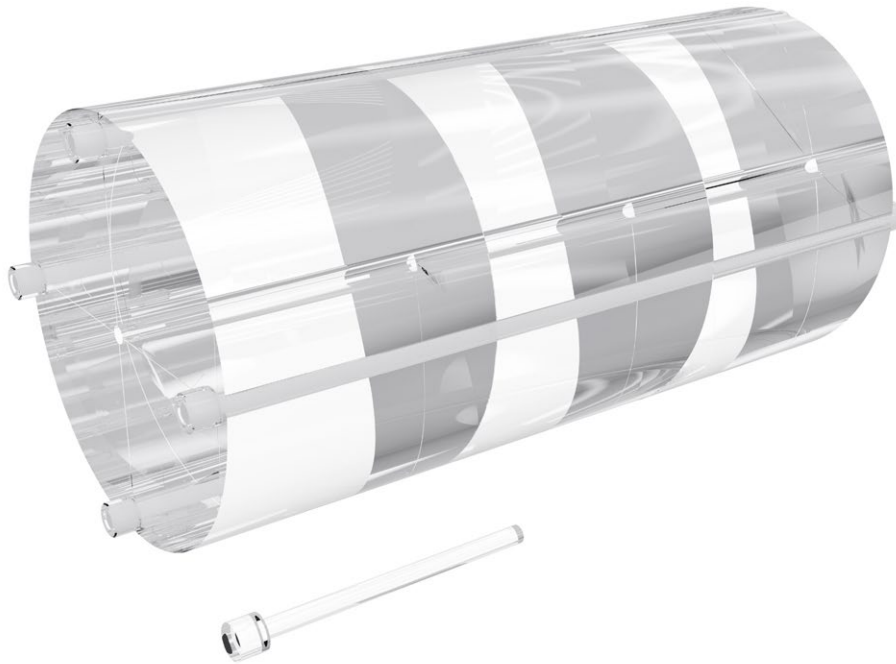




Pro-CT Dose AAPM TG-111

04-210



This phantom is **designed according to AAPM TG-111 findings**. The phantom comprises three 20 cm thick PMMA cylinders 300 mm in diameter similar to the standard Pro-CT Dose phantom. The total length of the phantom is 600 mm. **This allows capturing the majority of the scattered radiation and gives more accurate results than standard PMMA cylinders – 150 mm long**, 320 mm in diameter. Due to the large mass of the phantom, it is manufactured in three separate sections. In order to keep these sections aligned, mounting screws are included in the design.

Technical data (can be modified to customer specifications):

- total dimensions: diameter 300 mm, length 600 mm
- made of PMMA
- built of 3 separate 200 mm thick homogenous PMMA cylinders, with five $\varnothing 13.1$ mm CT probe holes (one in the middle and 4 around the perimeter, 90° apart and 10 mm from the edge)
- 4x 620 mm long PMMA filler plugs with thread to fill unused holes and hold all cylinders together
- 2x additional PMMA rods to help center the probe tip in the middle of the phantom
- engraved markings on phantoms for easier positioning
- carrying case with a trolley

Product features:

- complies with:
 - AAPM TG-111
- the Manual provides detailed guidelines for carrying out each test, results assessment and registration